

Presentation for
Ickworth Primary
School



**All Saints
Schools Trust**

Context

All Saints Schools Trust- brief history

- All Saints Schools Trust is a multi-academy trust for church and community primary schools that opened on 1 April 2018.
- Five local schools worked together to form the Trust based on our shared values.
- Three schools joined the Trust as part of Wave 2 on 1 September 2018
- We are approved as a sponsoring Trust by the DfE and sponsored our first school Great Whelnetham in September 2019
- Hardwick Primary School in Bury St Edmunds joined the trust in April 2021
- Thorndon Primary joined in January 2023.
- Benhall joined the Trust in September 23 and Cockfield Primary schools joined the Trust in December 23.
- Sexton's Manor have received their academy order and plan to convert on 1st April 2024 bringing the total of schools to 14.
- We now have a Eastern and Western Educational Director and Hub to facilitate closer working between our schools.
- We are a Trust that incorporates Community and Church Schools. ASST is made up of Community, VC and VA schools.
- We aim to grow within the next two years to 20 schools and currently have five further schools to invite to join us. After this we plan to consolidate and work with our chosen schools.



Trust Schools

Trust Members and Trustees

Trust Members

**Diocese
Corporate
Member**
Jane Sheat

**Diocese
Nominee**
*Archdeacon
Rich Henderson*

**Chair of
Trustees**
*James
Hargrave*

**Diocese
Nominee**
*Alister
Gourlay*

**Independent
Member**
Vacancy

Board of Trustees

CEO
*Melanie
Barrow*

*National
Leader of
Education*

**Foundation
Trustee #1**
*James
Hargrave*

*IT Director
University of
Cambridge*

*National
Leader of
Governance*

**Foundation
Trustee #2**
*Jill
Wright*

*Retired
Headteacher
& Governance
Advisor*

**Foundation
Trustee #3**
*Nancy
Ford*

*Former
Lawyer*

**Foundation
Trustee #4**
*Tom
Jarrett*

*CFO John
Milton
Academy
Trust*

**Foundation
Trustee #5**
*Peter
Robinson*

*Real Estate
Relationship
Advisor-
Barclays
Bank*

**Community
Trustee #6**
John Atkinson

*Retired
Headteacher
Ofsted
Inspector
and
Educational
Advisor*

**Community
Trustee #7**
*Paul
Kirkwood*

*New Business
Manager
Wilmott
Dixon*

**Community
Trustee #8**
*Dr. Amanda
Hull*

*Educational
Psychologist*

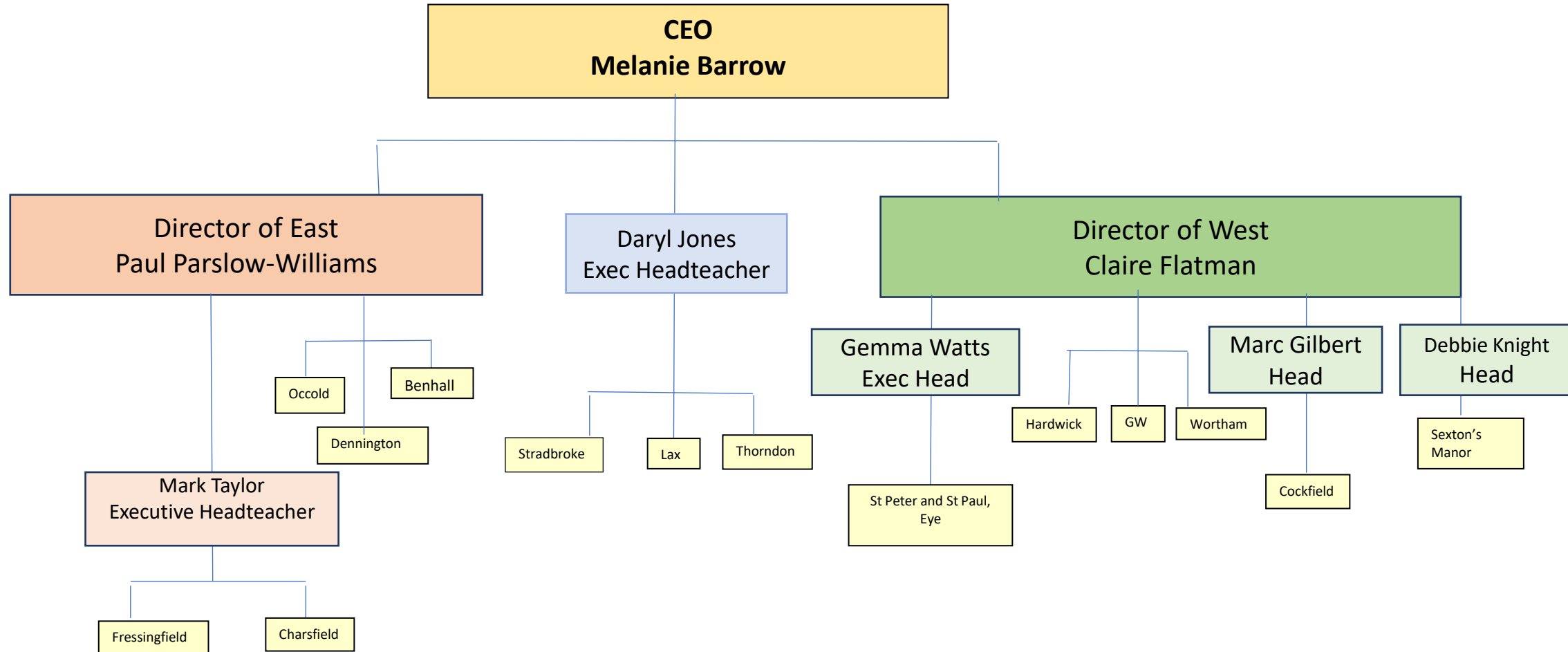
**Co-Opted
Trustee #9**
*Russell
Ayling*

*Serving Ofsted
Inspector.
Former
Secondary
Headteacher*

**Co-opted
Trustee #10**
*Benjamin
Sear*

*Director of a
Financial
Advice
Company*

Trust Leadership Structure





Values

Values which are important in the All Saints Schools Trust.....

Inclusion- provide equality and access to high quality education for all pupils.

Independence- develop pupils ability to learn and be self-sufficient.

Individuality- value independence of thought and character.

Inspiration- nurture an appreciation for culture, the arts and the ability to be a lifelong learner.

Interdependence- by working together in a Trust our schools and individuals within them can rely and depend on one another for support, resources and sharing of ideas.

Integrity- attain the qualities of being honest and having strong moral principles.

The Vision

We aim to make a difference to the lives of children. We believe in enabling every pupil to achieve their full potential.

High Expectations

Personal
Courage and
Optimism

Recognising
Talent

Objectivity.

Inclusiveness

Accountability

Compassion

Academy Improvement

- The most crucial role of all Academy leaders is to secure the best possible outcomes for children.
- All Saints Schools Trust provides monitoring, support and challenge to academy leaders and the Local Governing Body.

To facilitate this, each academy has an entitlement to a range of services including:

- Access to a designated academy improvement professional
- Membership of a strong network and community of practice.
- Leadership solutions.

We have had eight Ofsted inspections in nineteen months- all rated Good. Great Whelnetham has secured Good in all areas from being Sponsored when it was in Special Measures.



Expertise...

Governance

- **Former National Leader of Governance (NLG)**

Leadership

- **1 National Leader in Education (NLE)**
- **2 Local Leaders in Education (LLE)**

Teaching and Learning

- **7 Subject Leaders in Education (SLE) including Arts, Maths and Early Years and Phonics**
- **2 National Writing Project Leaders**
- **5 MAST (Specialist Masters qualification in Primary Mathematics)**



Personalised Support



We work with our academies to carry out individualised enquiries into practice that will enable them to reflect on their strengths and areas for development. This is usually carried out by executive leaders although we sometimes bring in the expertise of external consultants.



Working closely with our schools enables us to draw upon the expertise of school leaders and identify talent and good practice across the trust. This process creates a body of evidence that can be used by leaders and governors within the Trust as a platform for their own school improvement initiatives.



Mentoring Programmes and Support Packages

- Individualised help for teachers including Intensive Teacher Support Programme
- New leaders and SENDCos

Informal Support and Professional Camaraderie

- Do you have a letter for...?
- What do you do when....?
- Have you heard about...?
- Help...!

Leaders are part of a wider supportive team. They are never on their own and can reach out to others.



Professional Leadership Coaching

All leaders across the Trust have access to high quality coaching and we have four leaders being trained as qualified coaches.



Academy Conferences

- **Inspirational speakers**
- **Lectures and workshops**
- **Breakout groups**



Networking sessions offered opportunities for people to talk, reflect, contribute. Good to hear 1st hand from teachers and TAs.

Attendance from LGBs and everyone being there together felt like we were coming together as a trust.

Excellent, inspiring speakers...left me wanting to know more

Ambitious agenda...balance between the inspirational & the 'nitty gritty'

Exciting new ventures.....

- We have relocated our central team offices to Wingfield Barns.
- We have access to a 100-seater Conference Centre and many outbuildings which are used to hold conferences, events, galleries and fairs.
- We intend to utilize the site to put on Trust wide events for our pupils such as..... Literary Festivals, STEM workshops, Multi-cultural festivals, Carer Fairs and so much more. Watch this space!





CPD Workshops

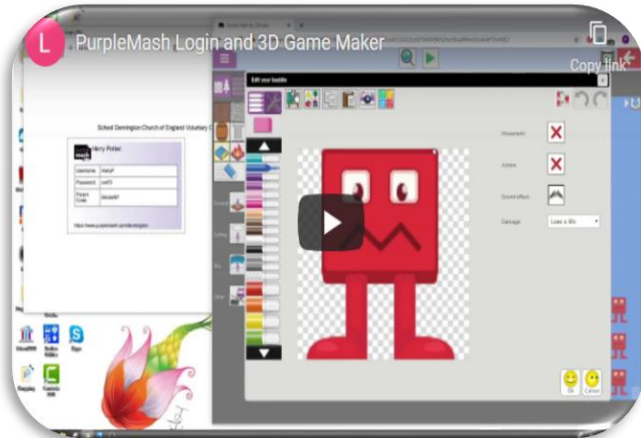
Bespoke programmes developed to meet the needs of school leaders.

Recent examples have included:

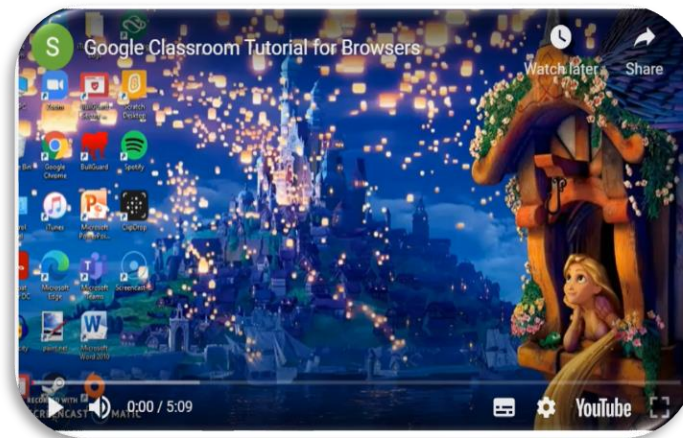
- Practical science
- Phonics
- Mathematical manipulatives
- Inspirational learning in the EYFS
- Creating reading cultures
- Mastery approaches to maths and bar modelling
- Mental health
- Curriculum development
- Preparing for 'deep dives'
- Early Years Ofsted preparation
- Writing Moderation
- Teaching Assistant Training
- Rosenshine's Principles



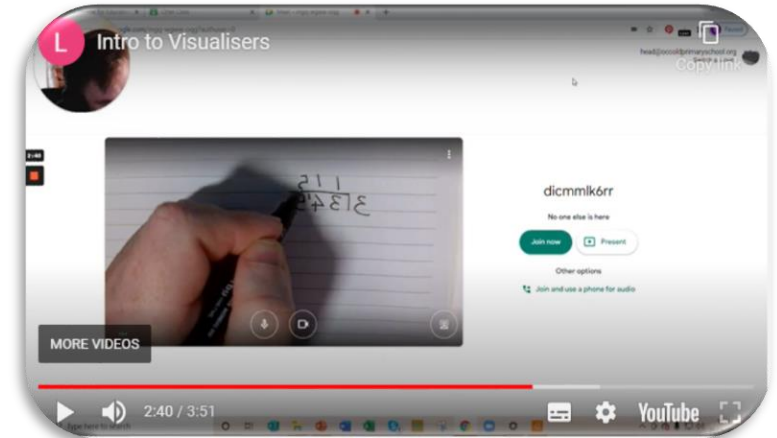
The pandemic...



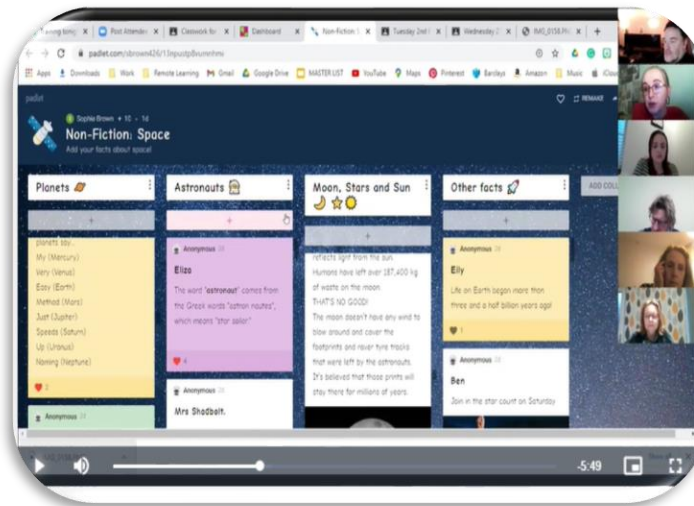
Using Purple Mash



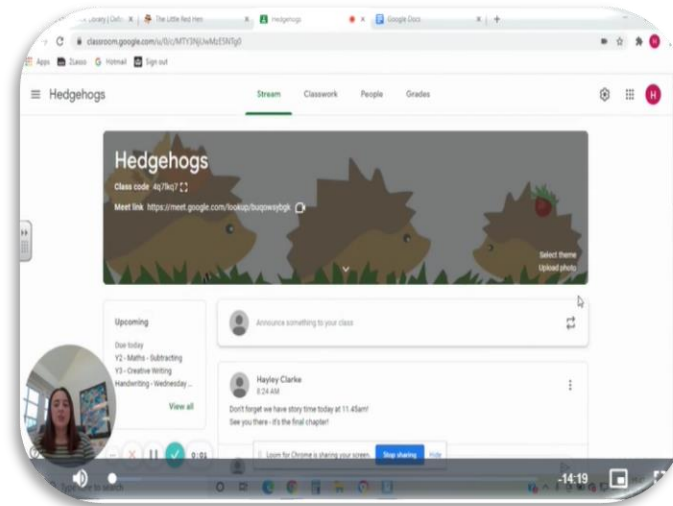
Using Google Classroom



Using Visualisers



Using Padlet



Dualless split screens



OBS for media work

44 65

you but I don't believe her. Mamma would get so worried leaving. I'm least but from the past we'd always so secretive. So next we at the point when I gave you the gloves? from your hair found charles.

When you had your hair cut? first cut? when shaving material? Mamma!


PS: how's your dad? P.P.S. has he got a job?

Well done Mabel, you've written a great letter and now will do for using a range of conjunctions

Don't forget punctuation! Please make sure every sentence begins with a capital letter and ends with appropriate punctuation

Fairy Tale Weekly

The Yolk On Humpty




the jumping wall. When he checked it carefully, he checked it really had underneath the wall was a pit of foam blocks. The last way to far as all in thought to the yesterday afternoon at school with a dramatic five pm. Humpty Dumpty sat and sizzled to an adult egg secretary. A fried egg. Plop. in the bag! Had a terrible accident at Lovell St. Wemy's Gym. The foot soldier (Humpty Dumpty's lieutenant) he was there because he said "From the other king commanded he checked of the gym. I red the equipment was heard an ear piercing safe and loud. Enraged scream. I turned round long was safe except had saw him fall off

Monday 11th May 2015

Learn how animals and plants adapt to their environment

Arctic Fox



The length of body is from 46 to 68 cm

Deep thick fur. It is brown in the summer time so that they are camouflaged

Arctic Foxes are omnivores and eat lemmings, voles, megal seal pups, fish, waterfowl and seabirds.

short muzzle, legs, short thick ears

their temperature drops to -70°C (-94°F)

their tail is 30cm long

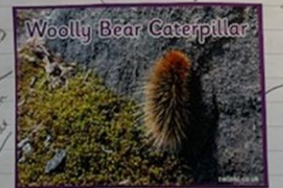
they all lay down to eat hares

has very keen hearing

They eat snowfall

Ice
Sea
Snow
Freezing cold

Woolly Bear Caterpillar



They make walls

hair to keep them warm in the winter

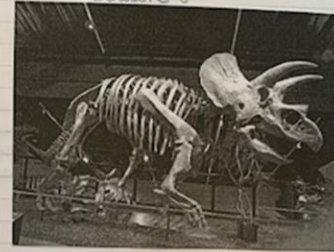
13 bands of stiff hair

They are all in warm

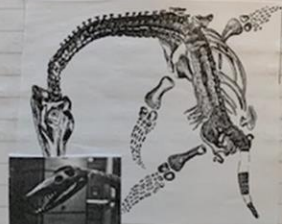
Monday 8th June 2015

Develop scientific ideas based from a fossil

Dinosaur



This creature walks on its feet because it's got four legs. It's a herbivore because of its teeth. It hasn't got sharp and long teeth. It uses its horns for defend.



This amazing Dinosaur is a cannibal you can tell by his teeth. It walks on his big feet because there is four. It defends its self by his sharp teeth.

Moderation of Pupil Work

Raises expectations

Builds skill and confidence in assessment judgements

Identifies best practice and areas to support

Log in

Use

All Saints Schools Trust Retweeted



DfE Regional Director, East of England @DfERegionalDirector - 7 days

Super visit today to Great Whelnetham Church of England Primary School, part of @AllSaintsMAT. Talked to children about learning new vocabulary (impressed that knew "hyperbole"), and analysing text for answers, and saw their wonderful jungle display! Thank you for having us!



2 retweets, 9 likes



All Saints School... @AllSai... · 26 Sep

Congratulations to Fressingfield Primary following their latest inspection.

The latest ASST news.....

14 Tweets

1 retweet, 1 like



All Saints Schools ... @AllSaints... · 5h

Great article in the EADT today celebrating Stradbroke Primary's successful "Good" overall Ofsted. Lovely photos of our children playing in the Autumn sunshine and further praise for the "Outstanding" behaviour and PD judgements;



eadt.co.uk

Children heavily praised in primary school's 'Good' Ofsted rating

1 retweet, 1 like

All Saints Schools ... @AllSaints... · 5h

Congratulations to Dennington Primary School-winners of the of the High Suffolk Tag Rugby Tournament (developing section) at Hartismere last week. Well done to th



The impact on new schools as they join ASST

When schools join we aim to keep their individual identities- uniforms and school names remain the same. We value the uniqueness of each school.

Schools report back that they feel part of a supportive network when they join the Trust.

We reassure parents that the things they know and value about their schools (the staff, the uniform, the name, location!) all stay the same.

The mix of Community, VA and VC schools works well- all feel they have kept their distinctive characters.

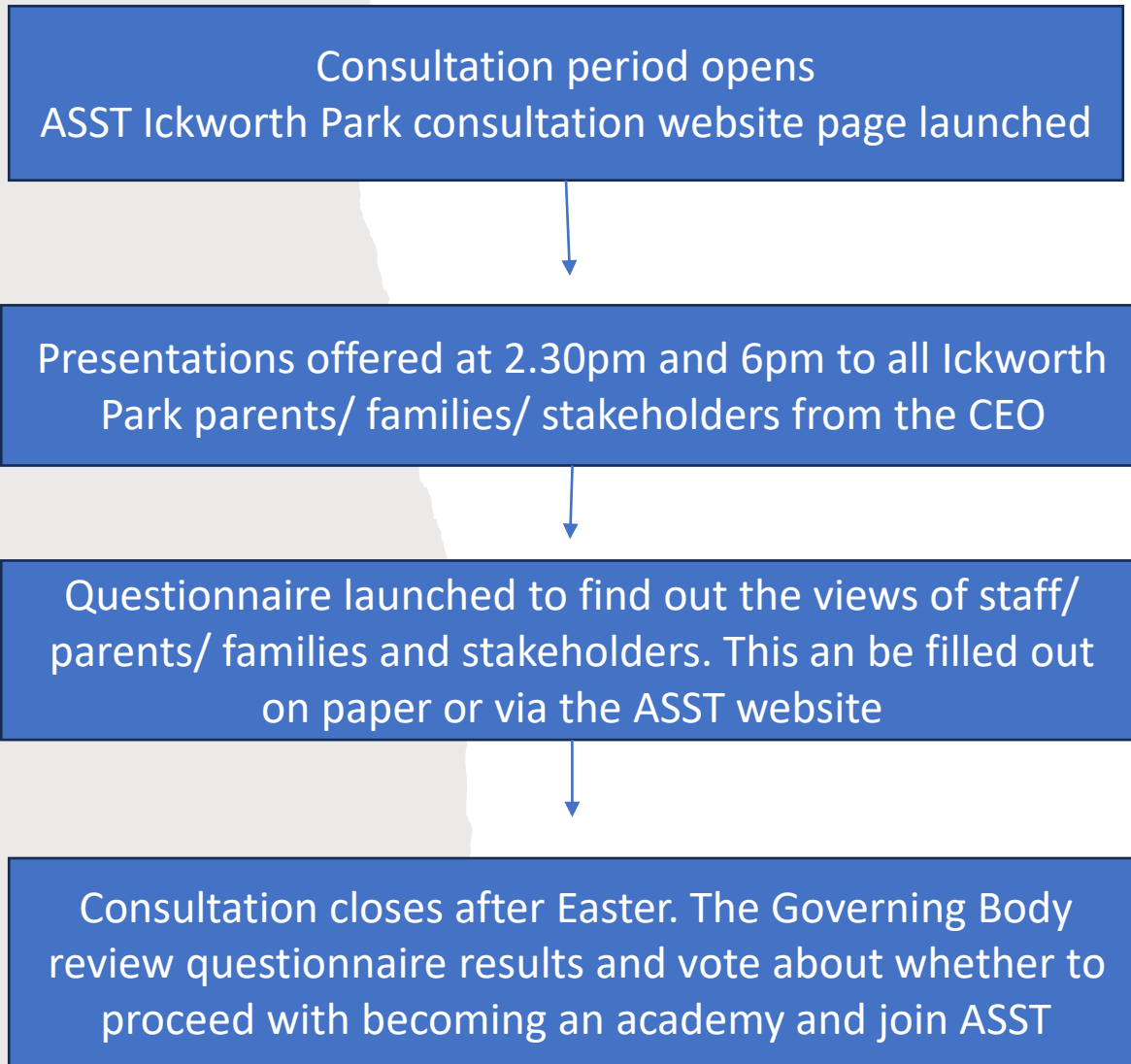
What happens to staff when a school converts?

A process called TUPE begins where the staff in a school transfer from working for Suffolk County Council to working for All Saints Schools Trust.

A TUPE meeting is held and HR representatives from SCC attend. ALL Unions are invited to this meetings to represent staff.

ASST recognises continuous service.

What happens now?



Any Questions?

You can find more frequently asked questions and also ask us questions on our website at:

<https://www.asst.org.uk/consultation>

